

GEAUGA COUNTY GEODETIC SURVEY

MONUMENT RECORD

STATION: Mon # 735

TOWNSHIP: Auburn

STATE PLANE COORDINATE SYSTEM:

OHIO NORTH ZONE

HORIZONTAL CONTROL DATA

VERTICAL CONTROL DATA

TYPE: \_\_\_\_\_

TYPE: \_\_\_\_\_

ORDER: \_\_\_\_\_

ORDER: \_\_\_\_\_

LATITUDE: \_\_\_\_\_ LONGITUDE: \_\_\_\_\_

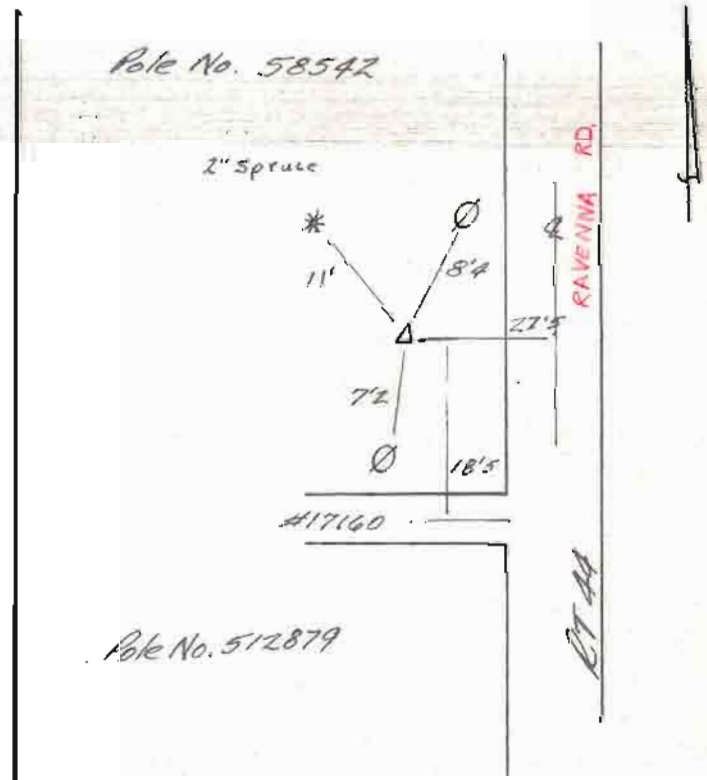
ELEVATION (FEET): 1213.51

Y (NORTH) (FEET): \_\_\_\_\_ X (EAST) (FEET): \_\_\_\_\_

ELEVATION (METERS): \_\_\_\_\_

Y (NORTH) (METERS): \_\_\_\_\_ X (EAST) (METERS): \_\_\_\_\_

DESCRIPTION:



THE MONUMENTS SET BY THIS SURVEY ARE 2.5" DIAMETER BRASS PLATES SET IN CONCRETE POSTS. THE PLATE READS, GEAUGA COUNTY CONTROL SURVEY. THE MONUMENTS SHOULD ACTUATE MAGNETIC LOCATOR DEVICES.

RECOVERY NOTES: